

Children's Heart Foundation



Annual Report 2013-2014

Address : Rm 419-424, Wah Kwong House,
Wah Fu Estate, Hong Kong
Tel : 2553 0331
Fax : 2553 4886
E-mail : chf@childheart.org.hk
Website : www.childheart.org.hk



Children's Heart Foundation

Table of contents

Contents	Pages
Notice of Extraordinary General Meeting & Annual General Meeting 2013/2014	2 - 3
Agenda of Extraordinary General Meeting & Annual General Meeting 2013/2014	4
Regulation of Extraordinary General Meeting & Annual General Meeting 2013/2014	5
Introduction	6
Services	7 - 9
Organizational Structure	10 - 13
Message from the Chairlady	14 - 17
Key Members & Activities 2013-2014	18 - 22
Heart Health Series 2013 (School Exhibition and Talk)	23 - 24
Key Fundraising & In-kind Donation Events 2013-2014	25 - 28
Key Medical Training and Developmental Programmes 2013-2014	29
Statistics Report	30 - 36



Children's Heart Foundation

CHILDREN'S HEART FOUNDATION

NOTICE is hereby given that an Extraordinary General Meeting of the Foundation will be held at Happy Valley Suite, 2nd Floor, Hong Kong Football Club, No.3 Sports Road, Hong Kong at 2:15 p.m. on Saturday, the 23rd day of August 2014 for the purpose of considering and if deem fit passing the following resolutions as Special Resolutions:

“THAT the Memorandum and Articles of Association of the Foundation be amended as marked up in the copy attached hereto, that the amended Memorandum and Articles of Association be approved and adopted as the Memorandum and Articles of Association of the Foundation in substitution for all the existing memorandum and articles thereof, and that the amended Memorandum and Articles of Association, if approved, shall only take effect upon the approval thereto given by the Registrar of Companies.”

By Order of the Executive Committee

A handwritten signature in black ink, appearing to be '郭映頌', written over a horizontal line.

Secretary

Date: 25. 7. 2014

A Member entitled to attend and vote at the Meeting is entitled to appoint a proxy to attend and vote on his behalf. A proxy need not be a Member.



Children's Heart Foundation

CHILDREN'S HEART FOUNDATION

NOTICE is hereby given that an Annual General Meeting of the Foundation will be held at Happy Valley Suite, 2nd Floor, Hong Kong Football Club, No.3 Sports Road, Happy Valley, Hong Kong at 2:30 p.m. on Saturday, the 23rd day of August 2014 for the following purposes :

1. To consider and approve the Audited Accounts of the Foundation for the period from 1st January 2013 to 31st December 2013 together with the Executive Committee's and Auditor's Reports attached thereto;
2. To elect Executive Committee Members;
3. To appoint PricewaterhouseCoopers as Honorary Auditors; and
4. To transact any other competent business.

By Order of the Executive Committee

A handwritten signature in black ink, appearing to be '鄭偉文' (Cheng Wei Wen), written over a horizontal line.

Secretary

Date: 25. 7. 2014

A Member entitled to attend and vote at the Meeting is entitled to appoint a proxy to attend and vote on his behalf. A proxy need not be a Member.



Children's Heart Foundation

Agenda of Extraordinary General Meeting & Annual General Meeting 2013/2014

Time	Content
2:15 - 2:20pm	Confirm the agenda and rules of the Extraordinary General Meeting
2:20 - 2:30pm	Approve the amendment on the CHF M&A and additional seats for the Executive Committee
2:30 - 2:35pm	Confirm the agenda and rules of the Annual General Meeting
2:35 - 2:45pm	Annual Report by Ms. Jenny Cheng, Chairlady
2:45 - 2:50pm	Financial Report by Miss Monica Woo, Treasurer
2:50 - 2:55pm	Question and Answer on the Annual Report and Financial Report
2:55 - 3:00pm	Approve the Annual Report & Financial Report
3:00 - 3:15pm	Election of Executive Committee Members for Year 2014/2015 a. Nomination of Candidates b. Polling for CHF EXCO 2014/2015
	Appointment of Honorary Auditor 2014/2015
3:15 - 3:20pm	Exco members Group Photo
3:20 - 3:25pm	Presentation of Academic Award Scheme 2014
3:25 - 3:30pm	Presentation of Lucky Money Wishes 2014
3:30 - 3:35pm	Certificate Presentation of %All-Rounded Wannabes+
3:35 - 3:45pm	Children Performance
3:45 - 4:30pm	Cocktail Reception



Children's Heart Foundation

Regulation of Annual General Meeting **2013/2014**

1. Rundown and regulation are listed on the Meeting documents.
No amendment shall be made unless it is propose
2. Every member, who joined the CHF on or before 23 August 2014 and aged 18 or above, shall have one vote on each discussing issue.
3. Only those with valid voting card can vote.
4. Each agenda should be proposed and seconded before voting.
5. If being appointed, please vote with your own valid voting card and the valid voting card(s) of the proxy.
6. When voting, please vote according to the instruction of the Chair. Please do not put the voting card down until counting is finished.



Children's Heart Foundation

Introduction

The Children's Heart Foundation (CHF) was originally formed as a mutual support group for parents with children suffering from congenital heart disease. The parents realized that sharing experiences and information was a great benefit to all concerned. In 1994, with the support of doctors, nurses and medical social workers at the Cardiac Paediatric Unit of the Grantham Hospital, the CHF was founded as a registered charitable organization devoted to supporting children suffering from heart disease and their families.

Over the years, the Foundation has grown from a small group of volunteers into an organization which has a team of full-time staff and subcommittees specializing in different issues related to children with heart disease. As our organization depends entirely on public support and donations, the volunteers and supporters remain the backbone of the Foundation and the reason for its continuous success.

Objectives

1. To provide financial and psychological support to families with children suffering from congenital heart disease.
2. To raise public awareness about congenital heart disease.
3. To support the development of technology and methods to detect and treat congenital heart disease.



Children's Heart Foundation

Services

1. Financial support for families

Patients have to pay for treatments and equipment such as special catheters and pacemakers which are not covered by government. The CHF has helped hundreds of less well-off families through its Medical Financial Support Scheme to ensure children receive appropriate treatment.

2. Purchase of medical equipment

New technology and medical breakthroughs are an essential part of improving treatment. The CHF helps upgrade existing facilities and services by purchasing the latest high-tech equipment, supplementing the services provided by the public hospitals.

3. Counseling services

All parents expect their baby to be born healthy. When they are told their child has a heart problem, the first reaction is fear; fear of the unknown and fear about the future. Mum and dad are full of questions - What's wrong with my baby? What will happen next? Why did this happen? What treatment does the child need? The CHF provides counseling and support services for parents who need help.

4. House of the Heart

When a child is admitted to hospital for heart surgery or treatment, parents face enormous difficulties and endure great stress. The House of the Heart (HOH) allows parents to get a good night sleep and spend more time with their children. They can freshen up during the day or just take time out to relax. It also reduces the amount of time parents spend travelling to and from the hospital.

In accordance with the Queen Mary Hospital redevelopment, the HOH has been relocated to Wah Kwong House Wah Fu Estate. Internet and Wi-fi service is now available at the HOH, while parents can also prepare simple dishes for their children. To facilitate the counseling service, a play room is established as well.



Children's Heart Foundation

Services

5. Educational programmes

Most people have never heard of congenital heart disease, despite it being one of the most common congenital problems among children. Through various educational programmes and exhibitions, the CHF promotes public awareness about heart health and raises support in the community and schools for these special children. The CHF also organises talks so parents can learn more about caring for children with heart disease, nutritional issues and child development.

6. Parents support group

There are many different types of problems associated with congenital heart disease. Caring for these special children can be difficult and stressful, so talking to people who have the relevant experience, knowledge and understanding can give parents a sense of belonging. Parents can often feel helpless, so it is a real comfort to be able to share their anxiety with others who have been through a similar experience. The CHF works to promote self help and mutual support between these families. Parents can share their experiences at the wards, in the support group meetings and during other activities. This is an effective way of enhancing communications between parents at a very difficult time.

7. Ward visits

Hospitalisation is always stressful and painful for both the children and their families. Unfortunately, spending time in hospital is a common occurrence for children with heart disease. Ward visits by professional teams and trained volunteers are essential as they stimulate the children's development and facilitate positive thinking among parents. Volunteers help with artwork, reading and storytelling, while parent volunteers share their personal experiences, giving other parents the confidence to face the challenges ahead.



Children's Heart Foundation

Services

8. Developmental programmes

Because of their physical limitations, some children with heart disease encounter learning problems which affect their education, social lives and psychological development. The CHF organises a variety of programmes like the children's choir, art workshops, adventure-based camp and leadership training programmes. As they have a lot in common, the children feel comfortable taking part in these activities together. The CHF also organises outdoor and indoor activities such as camping to strengthen the parent-child relationship and boost self confidence.

9. Medical development and exchange

The CHF brings overseas surgeons and cardiologists to Hong Kong to share their experience with local medical staff. This is of vital importance as it helps staff keep up with all the latest advances in treatment and medical technology.

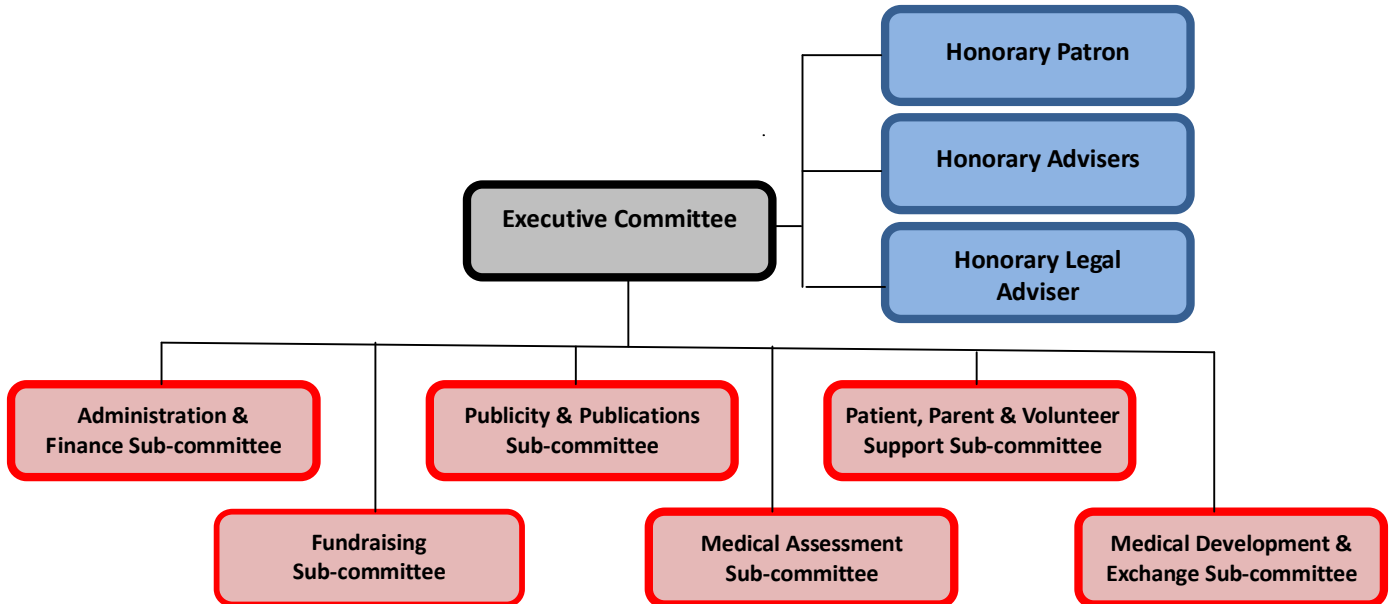
The CHF also sponsors medical staff to receive further training and attend local and overseas seminars and conferences. Through Queen Mary Hospital, the CHF now provides funding so medical staff from Mainland China can receive training in Hong Kong.

10. Research

The CHF provides funding for research into congenital heart disease with an aim to promote medical advancement.

Children's Heart Foundation

Organizational Structure



Hon. Patron : The Hon. Selina CHOW, JP
 Hon. Advisers : Ms. Vivien V.M. CHONG
 : Dr. Angela M.Y. LAU
 : Dr. C.C.LUK
 : Mr. Duncan W. PESCOD, JP
 Hon. Legal Adviser : Mr. Andy KUNG

Executive committee members 2013/2014

Chairlady : Ms. Jenny Y.F. CHENG
 Vice Chairman : Dr. Adolphus K.T. CHAU
 : Ms. Christine W.C. HO
 Secretary : Ms. Connie Y.L. LAU
 Treasurer : Miss Monica K.T. WOO
 Members : Ms. W.K. AU
 : Mr. Jack Y.H. LO
 : Mrs. Yasmin MAHBOOBANI
 : Dr. K.T. WONG
 : Mr. Patrick T.F. YEUNG
 : Dr. T.C. YUNG
 Hon. Auditor : PricewaterhouseCoopers

(Listed in alphabetical order)



Children's Heart Foundation

Organizational Structure

Administration and finance sub-committee 2013/2014

Chairperson	:	Ms. Connie Y.L. LAU
Members	:	Mr. Patrick W.Y LAM
	:	Mr. Kinze K.S. LEUNG
	:	Mr. Jack Y.H. LO
	:	Miss Monica K.T. WOO

Fundraising sub-committee 2013/2014

Co- Chairperson	:	Mrs. Yasmin MAHBOOBANI
	:	Prof. David ZWEIG
Members	:	Ms. Sophia Y. F. SO
	:	Ms. Christie M.S. WO
	:	Ms. Anna H.M. YAU

Publicity and publications sub-committee 2013/2014

Chairperson	:	Dr. K.T. WONG
Members	:	Mr. Charles Y. K. LEE
	:	Mr. Kinze K.S. LEUNG
	:	Mr. Jack Y.H. LO
	:	Mr. Jonathan MARSH
	:	Ms. Christine M.W. YIP

Medical assessment sub-committee 2013/2014

Consultant	:	Dr. Adolphus K.T. CHAU
	:	Dr. T.C. YUNG
Chairperson	:	Ms. Christine W.C. HO
Member	:	Mr. Patrick T.F. YEUNG

(Listed in alphabetical order)



Children's Heart Foundation

Organizational Structure

Patient, parent and volunteer support sub-committee 2013/2014

Chairperson	:	Ms. Christine W.C. HO
Members	:	Ms. Rachel S.P. CHEUNG
	:	Ms. Helen L.S. HO
	:	Mr. Nelson C.C. HO
	:	Ms. Connie Y.L. LAU
	:	Mr. Kinze K.S. LEUNG
	:	Mr. Jack Y.H. LO
	:	Ms. Lolitter S.K. NG
	:	Miss Suyi F.Y. SO
	:	Miss Sony H.N. SO
	:	Mr. Ken M.K. WONG
	:	Miss Monica K.T. WOO
	:	Mr. Charles K.B. YEE

Medical development and exchange sub-committee 2013/2014

Chairperson	:	Dr. Adolphus K.T. CHAU
Members	:	Ms. W. K. AU
	:	Ms. Christine W.C. HO
	:	Dr. T.C. YUNG

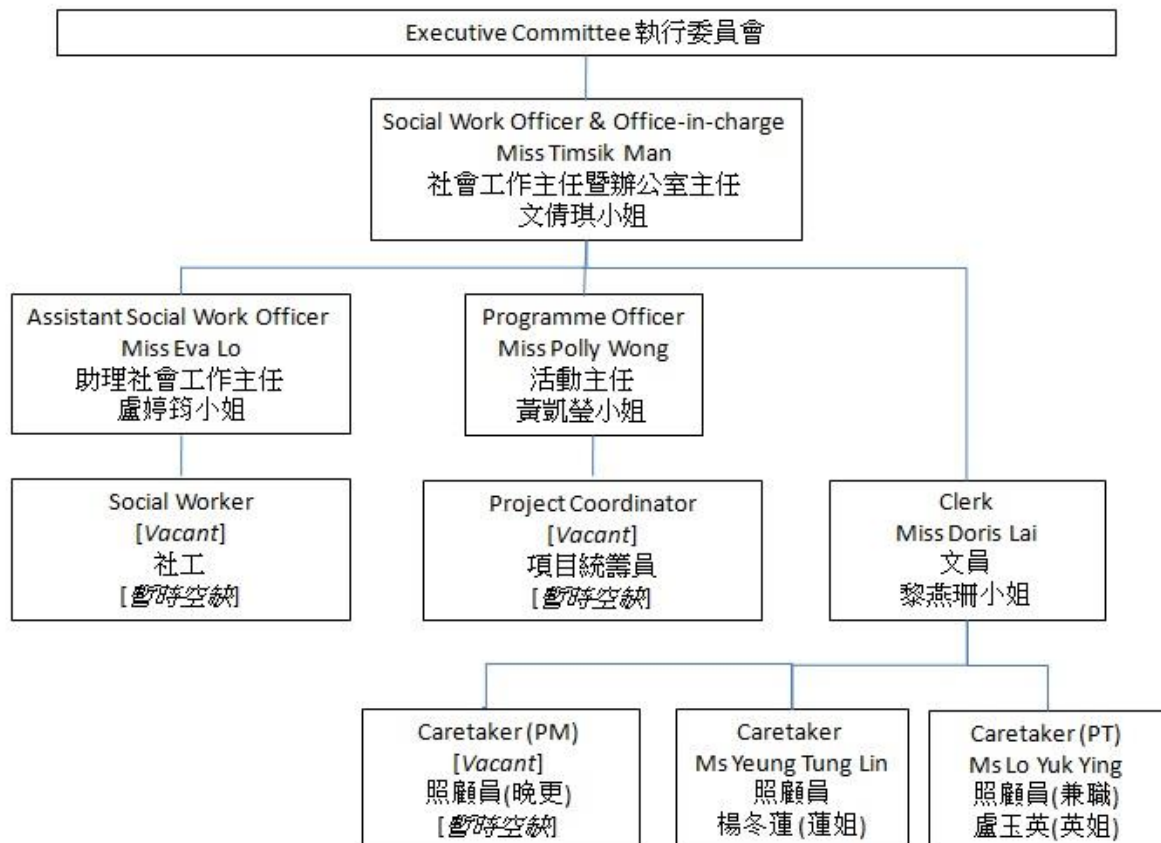
(Listed in alphabetical order)



Children's Heart Foundation

Organizational Structure

CHF Staff Chart





Children's Heart Foundation

Message from the Chairlady

20 Years of Love and Care

Dear members,

Welcome to join the CHF Extraordinary General Meeting & Annual General Meeting 2013/2014.

I am honoured to give you the report here on behalf of the Executive Committee. It is my pleasure to be the chairlady and walk through the years with the CHF. It is encouraging to have seen the development of the CHF from a small group to a charity with more than 3,000 members. I look on our future with confidence and elation as we continue to build, expanding our membership limit to 10,000. And this is why we feel like to increase the numbers of executive committee to 13 that allow us looking after more congenital heart disease children and their families.

On the occasion of the CHF 20th anniversary, we are pleased to have various programmes. We greeted 2014 with our 20th Anniversary T-shirt Design Competition, encouraging students to embrace their creativity and support children with congenital heart disease. Met with enthusiasm, we received 800 entries from 60 participating primary and secondary schools. The CHF subsequently selected 86 outstanding artworks for an exhibition on Sept 6th at the Hong Kong Polytechnic University while two winning designs were made into T-shirts for raising awareness on congenital heart disease.

Simultaneously, the House of the Heart was relocated this year to Wah Fu Estate and its Grand Opening Ceremony was held on March 29th. Despite of the inclement weather, we were able to relocate indoors and continued to revel in the festivities.



Children's Heart Foundation

Message from the Chairlady

20 Years of Love and Care

We were very delighted to have the Secretary of Food and Health Dr. Ko Wing Man, sponsors, corporate partners, our children, parents and volunteers joined us on the day. In particular, I would like to give a special credit to Operation Santa Claus and Nu Skin Enterprises Hong Kong, LLC. for sponsoring the set up and operation of HOH in Wah Fu.

Over the year, the CHF works to develop services for our youth patients. Both of the Teens Club and YP Training Scheme are under the guidance of our social workers. Through a variety of activities including volunteer work, skill training groups and sharing, we work to boost self-confidence, instill a sense of responsibility and engender independence which are invaluable traits in facing future challenges in higher education and employment. We believe their friendship will be a strong power and resource helping them to take the future challenges. We look forward to having more teenagers support each other as they join us in projects to come.

On the medical side, the CHF spent a record of HK \$1.6 million on the Medical Financial Support Scheme and Heart Valve Replacement Programme in 2013. A total of 66 kids received our help. We will continue to look for corporate sponsorship to subsidize related expenses. Today, I am pleased to report that we have just received a generous donation of HK\$1M from the New World Group Charity Foundation Limited, for the Overseas Surgeon Visiting Program for Paediatric Cardiac Surgery to perform complex heart surgery in HK. This project will not only benefit the children with complex heart defects, but also the medical staff who, through a series of medical exchanges, can acquire advanced skills and



Children's Heart Foundation

Message from the Chairlady

20 Years of Love and Care

knowledge. It will be worth to note that American Women Association Hong Kong has sponsored the CHF to buy new tablets for the use in the ward that helps promote kids development as much as we can.

The CHF treasures the support from our donors and sponsors. To thank for their long-term support, a donation tree was set up at the House of the Heart, a metaphor for the strong growth only possible with their kindness. On behalf of CHF, I particularly would like to thank Nu Skin Enterprises Hong Kong, LLC., Operation Santa Claus, Standard Chartered Bank (HK) Limited, Ip Chi Shing Charitable Foundation Limited, Hasbro Far East Limited, AIA Foundation, Aaron Zweig and Family, The Ohel Leah Synagogue Charity, Citi Bank, FWD Life Insurance Company (Bermuda) Limited, Fuji Xerox (Hong Kong) Limited, The Dairy Farm Co Ltd - Welcome and Ng Teng Fong Charitable Foundation for their very generous donation and support.

In addition to corporate sponsorship, we raised over HK \$200,000 from the Lucky Money Wishes 2014 Campaign thanks to the positive participation from the public and their eagerness to assist children with congenital heart disease. The CHF will continue to pursue more fundraising activities in order to offer additional services.

In celebrating the 20th Anniversary, we are about to restructure of the Foundation's website. In addition to beautifying the existing layout, we also aim to enrich the site's content with more detail information on heart disease. We hope these changes will make the site more accessible to the public and increase our visibility.



Children's Heart Foundation

Message from the Chairlady

20 Years of Love and Care

I am glad that I have come across with many others who shared similar experiences and devoted to help children with heart disease in the CHF. Such support has always empowered me to cope the challenges of my children. In particular, I really want to thank the Hon. Patron Mrs. Selina Chow, the Hon. Legal Advisor Mr. Andy Kung, the Hon. Auditor . PwC and all the Hon. Advisor for their loyal and dedicated support over the years. I would also love to give a heartfelt thank to our Exco members and sub-committee members for their effort in leading and managing the CHF that enables a flourish the development. Because of you, we manage to grow and be strong. Thank you.

Last but not least, I wish to thank our office staff, who have served with dedication. Despite the relocating projects over the year, they have persevered same standard of care for our kids. I would also like to thank all volunteers, who selflessly donate their time and effort to helping our foundation.

Support for the CHF is not something we take for granted. The CHF will, in years to come, continue to strive in line with our founding purpose, committed to provide quality care to children with congenital heart disease, as well as their family and friends, with empathy, expertise, and excellence.

Thank you very much!

Jenny Cheng
Chairlady



Children's Heart Foundation

Key Members' Activities 2013-2014

2013

	Month	Event
1	Jan	Friends of CHF: Presentation Ceremony 2012
2	Jan	The Caring Company Partnership Expo 2013
3	Jan	Chinese New Year Ward Visit 2013
4	Jan	New Year Gathering 2013
5	Jan	Tour to Disneyland
6	Feb	Teens Club: Shall We Talk
7	March	Children GO! GO! GO! . Easter Cupcake Making Class
8	March	Teens Club: The Acting Battle
9	March	Write my Thank You Card
10	April	Cooking Master . Parent-child Rice Dumpling Making Class
11	May	Talk on Chinese Medicine . Acupuncture Points Massage
12	May	Little Designer . Recycle Bag Making Class
13	May	Experience in the Dark
14	May	Design Notice Board at the Ward
15	June	Sweet Tour at Disneyland
16	June	Morgan Stanley Services Day 2013
17	June	CHF Newsletter (Summer 2013)
18	July	Summer Camp 2013



Children's Heart Foundation

Key Members' Activities 2013-2014

2013

	Month	Event
19	July . Aug	Summer Incredibles
20	Aug	Singing Angels Performing Team
21	Aug	Teens Club
22	Aug	Annual General Meeting 2012/2013
23	Aug	Mid-Autumn Moon Cake Class
24	Sept . Oct	HAL Dancing Team
25	Sept . Oct	Academic Award Scheme 2013
26	Oct	Ward Visit Training Course
27	Nov	20th Anniversary T-shirt Design Competition
28	Dec	Tour to the Concert by Mr. Louis Yuen
29	Dec	Christmas Party 2013
30	Annual	YP Training Scheme 2013
31	Annual	Ward Visits



Children's Heart Foundation

Key Members' Activities 2013-2014

2014

	Month	Event
1	Jan	Tour to Xia Feiyun Conducts Chinese Music Favourites
2	Jan	Housing Warming of CHF House of the Heart
3	Feb	Caring Company Partnership Expo 2014
4	March	New Year Gathering
5	March	Grand opening of the House of the Heart and 20th anniversary funfair
6	March	Friends of the CHF 2013
7	April	Workshop for 50th Anniversary of Fuji Xerox (Hong Kong) Limited (FXHK)
8	April	Visits of Madame Tussauds Hong Kong
9	May	Yoga Experience Class: Stress Relieving and Relaxing
10	May	A special Mother's Day Present - Glass Accessory Class
11	May	Dragon Boat Festival - Rice Dumpling Making Class
12	June	Morgan Stanley Services Day 2014
13	June	FXHK %To Grow with Hong Kong . Greener Future+Exhibition
14	June	Summer Camp 2014
15	July	CHF Donation Tree Ceremony
16	July	%Believe In Zero, Make A Video+Workshop by UNICEF



Children's Heart Foundation

Key Members' Activities 2013-2014

2014

	Month	Event
17	July	Master Gun
18	July - Aug	All-Rounded+Wannabes
19	July - Oct	Kids Generation
20	Aug	Goldman Sachs Volunteer Day
21	Aug	Extraordinary General Meeting & Annual General Meeting 2013/2014
22	Aug	Academic Award Scheme 2014
23	Sept	Presentation and Exhibition for CHF 20 th Anniversary T-shirt Design
24	Sept	Tour to the Disney 90th Anniversary Concert with the Hong Kong Philharmonic Orchestra
25	Annual	YP Scheme 2014
26	Annual	Ward Visit

Children's Heart Foundation

Sponsors of Key Members' Activities 2013-2014

Calvin Klein	CREDIT SUISSE 瑞信	Dwatch
European GOURMET LIMITED 歐洲食品有限公司	FUJI XEROX	Goldman Sachs 高盛
Hasbro	HIENG WAH (hK) decoration co., ltd.	HOME RETAIL GROUP
香港中樂團 HONG KONG CHINESE ORCHESTRA 藝術總監：閔惠昌 ARTISTIC DIRECTOR: YAN HUI CHANG	香港會議展覽中心 Hong Kong Convention and Exhibition Centre	HONG KONG Disneyland
HKUST BUSINESS SCHOOL 香港科大商學院	KAPLAN 楷博教育	KGI CHINA DEVELOPMENT FINANCIAL
MATTEL	Madame Tussauds HONG KONG 香港杜莎夫人蠟像館	Morgan Stanley
NG TENG FONG CHARITABLE FOUNDATION 黃廷方慈善基金	30	PANG, KUNG & Co. SOLICITORS & NOTARIES
PricewaterhouseCoopers	RSM Audit • Tax • Advisory Celebrating 50 years 1964 - 2014	OPERATION SANTA CLAUS South China Morning Post
Sea Gull Photographic Association Ltd.	Standard Chartered 渣打銀行	THE LUXE MANOR Established 2005
Toys R Us	UniSmart UniSmart Asia Ltd.	惠康 wellcome

Listed in alphabetical order



Children's Heart Foundation

Heart Health Series 2013 (School Exhibition and Talk)

	Participating School	Exhibition	Talk
1	Alliance Primary School, Whampoa	★	★
2	Aplichau Kaifong Primary school		★
3	Cartias Chong Yuet Ming Secodary School		★
4	Chan Shu Kui Memorial School	★	
5	CMA Secondary School	★	★
6	Fanling Government Primary School		★
7	GCC&ITKD Lau Pak Lok Secondary School		★
8	Heung To Secondary School (Tseung Kwan O)	★	★
9	HHCKLA Buddhist Chan Shi Wan Primary School	★	★
10	Jordan Road Government Primary School		★
11	Kowloon Bay St. John The Baptist Catholic	★	
12	Leung Kui Kau Lutheran Primary School	★	
13	Lingnan Primary School	★	★
14	Lingnan University Hong Kong Alumni D.S.S. Primary School		★

Listed in alphabetical order



Children's Heart Foundation

Heart Health Series 2013-2014 (School Exhibition and Talk)

	Participating School	Exhibition	Talks
15	Ma On Shan Ling Liang Primary School	★	
16	Ning Po No.2 College	★	
17	North Point Government Primary School	★	
18	Pentecostal Lam Hon Kwong School	★	★
19	S.K.H. Ching Shan Primary School	★	★
20	S.K.H Fung Kei Millennium Primary School		★
21	S.K.H Kei Hin Primary School		★
22	S.K.H St. Clement's Primary School		★
23	Sham Shui Po Govt. Primary School	★	★
24	Tack Ching Girls' Secondary School	★	
25	Wai Kiu College	★	★
26	Yew Chung International School - Secondary	★	
	Total	17	18

Listed in alphabetical order



Children's Heart Foundation

Key Fundraising Events & In-kind Donation 2013-2014

2013

	Month	Event
1	Jan	Charity Campaign of Nu Skin Enterprises Hong Kong, LLC
2	Jan	Charity Sales of Man Hing Hong
3	Feb	Champion Sports and Arts Association
4	Feb	RED Gift from SANOFI
5	Feb - March	Lucky Money Wishes Campaign 2013
6	March	DP World Charity Event
7	April	Colour My World Charity Show
8	April	Donation from Orient Overseas Container Line Limited
9	May	“Share My Song+of CRHK, nominated by Mr. Patrick Yeung
10	June	The Roche Children Walk 2013
11	July	Charity Campaign of Nu Skin Enterprises Hong Kong, LLC.
12	July	KSL Walkathon 2013
13	Aug	Infinity Workshop Charity Music Show 2013
14	Aug . Sept	Charity Sales of Jason Food & Living
15	Aug - Nov	FWD Virtual Walk
16	Sept	Jamieson Peak Challenge 2013
17	Oct	Heart-to-Heart Charity Walk 2013 % Hug And Love+



Children's Heart Foundation

Key Fundraising Events & In-kind Donation 2013-2014

2013

	Month	Event
18	Dec	Alfestco Little Christmas Hat Campaign 2013
19	Dec	Southco Asia Limited Christmas Charity Event
20	Dec	%Bump Up Little Moments of Happy Moments+by Hong Kong Disneyland
21	Annual	RBS Giving Program
22	Annual	In-kind Donation <ul style="list-style-type: none"> ❖ Dwatch ❖ Fuji Xerox (Hong Kong) Limited ❖ Hasbro Far East Limited ❖ Long King Printing Company Limited ❖ Mattel Asia Pacific Sourcing Limited ❖ Pentland Asia ❖ Toys+R+Us
23	Annual	Corporate Donation Project 2013 <ul style="list-style-type: none"> ❖ Hasbro Far East Charitable Programme 2013 ❖ Heng Wah (HK) Decoration Company Limited ❖ Ng Teng Fong Charitable Foundation ❖ The Ohel Leah Synagogue Charity 2013
24	Annual	Bulk Mailing Campaign <ul style="list-style-type: none"> ❖ Hong Kong Electric Company ❖ Nanyang Comercial Bank, Ltd
25	Annual	Placing CHF Donation Box
26	Annual	Donation for a RED gift set campaign
27	Annual	CHF T-shirt Charity Sales
28	Annual	Greeting Card Charity Sale



Children's Heart Foundation

Key Fundraising Events & In-kind Donation 2013-2014

2014

	Month	Event
1	Jan	Charity Campaign of Nu Skin Enterprises Hong Kong, LLC
2	Jan	Lucky Money Wishes 2014
3	Feb	Facebook Charity Campaign of FINDS Restaurant of The Luxe Manor
4	Apr	OOCL Charity Donation 2014
5	Apr . Mar 2015	%Customer First+Care Program of Fuji Xerox (Hong Kong) Limited
6	May	Ice-cream Charity Sale by Nike 360 Holding B.V.
7	June	The Roche Children's Walk 2014
8	July	Charity Campaign of Nu Skin Enterprises Hong Kong, LLC
9	Aug	Charity Campaign of XYZ
10	Aug	Wave for a Good Cause by Jason Foods & Living
11	Oct	Heart-to-Heart Charity Walk 2014 %Bump up to help heart disease children+
12	Annual	RBS Giving Program
13	Annual	In-kind Donation ❖ Fuji Xerox (Hong Kong) Limited ❖ Hasbro Far East Limited ❖ Keyura Association



Children's Heart Foundation

Key Fundraising Events & In-kind Donation 2013-2014

2014

	Month	Event
14	Annual	Corporate Donation Project 2014 ❖ American Women's Association of Hong Kong ❖ Hasbro Far East Limited ❖ New World Group Charity Foundation Limited ❖ Ng Teng Fong Charitable Foundation ❖ Nu Skin Enterprises Hong Kong, LLC. ❖ The Ohel Leah Synagogue Charity 2014
15	Annual	Bulk Mailing Campaign ❖ Nanyang Commercial Bank
16	Annual	Placing CHF Donation Box
17	Annual	Donation for a RED gift set campaign
18	Annual	CHF T-shirt Charity Sale
19	Annual	Greeting Card Charity Sale



Children's Heart Foundation

Key Medical Programme 2013-2014

2013

	Month	Project
1	Annual	Medical Financial Support Scheme (MFSS) 2013
2	Annual	Heart Valve Programme 2013
3	Annual	Medical Research Sponsorship: Copy-number variation in Chinese patients with conotruncal defects . a pilot study of 100 patients+
4	Annual	Sponsorship for China California Heart Watch 2013

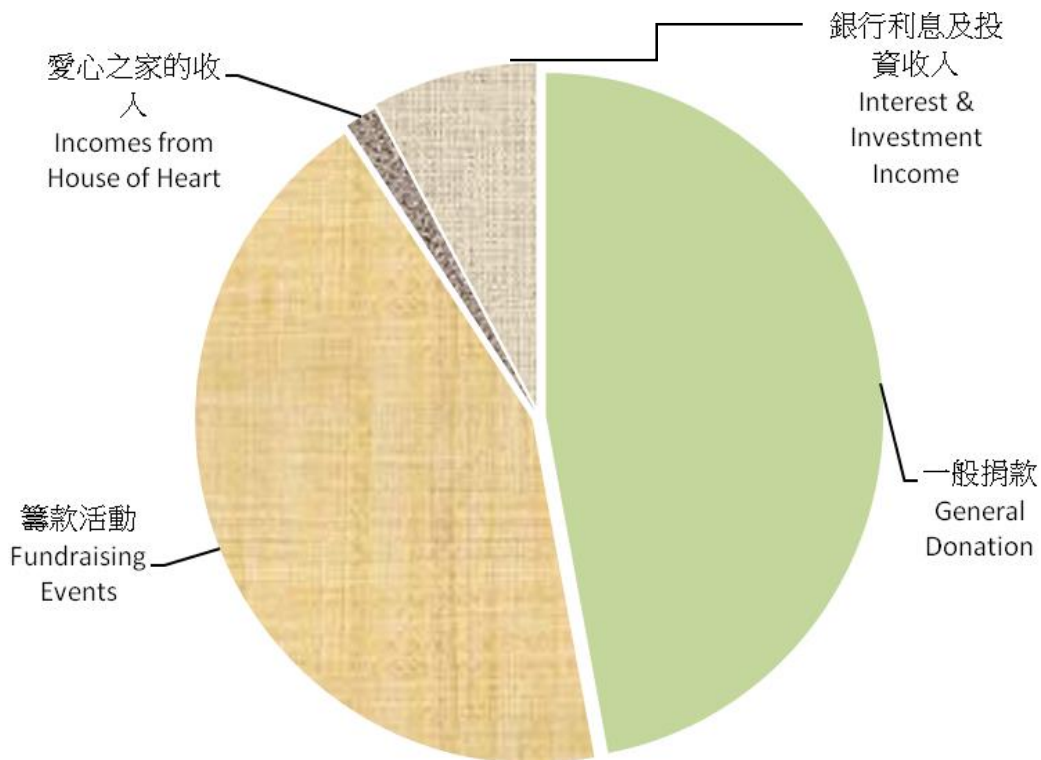
2014

	Month	Project
1	Apr	Sponsorship for purchasing a full set of Neonatal Ventilator to Queen Mary Hospital
2	Annual	Medical Financial Support Scheme (MFSS) 2014
3	Annual	Heart Valve Programme 2014
4	Annual	Medical Research Sponsorship: Stopping SADS-stories from Happening . Genetic Diagnosis of SADS (Sudden Arrhythmia Death Syndromes)
5	Annual	Oversea Surgeons Visiting Program for Paediatric Cardiac Surgery
6	Annual	Sponsorship for China California Heart Watch 2014

Children's Heart Foundation

Statistics Report – 1

Source of Overall Income of the CHF 2013



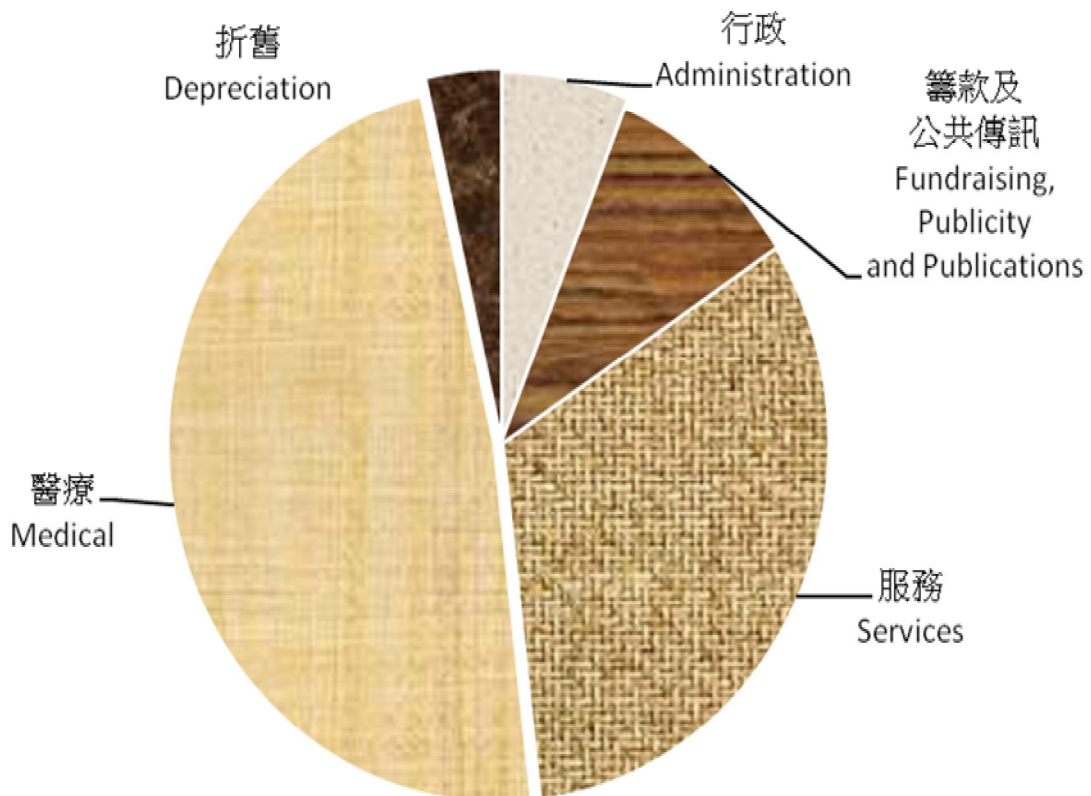
General Donation	HK\$ 3,100,000 (47%)
Fundraising Events	HK\$ 2,870,000 (44%)
Interest & Investment Income	HK\$ 520,000 (8%)
Incomes from House of Heart	HK\$ 100,000 (1%)
Total Income	HK\$ 6,590,000*

* Round to the nearest thousand

Children's Heart Foundation

Statistics Report – 2

Expenditure Distribution of the CHF 2013



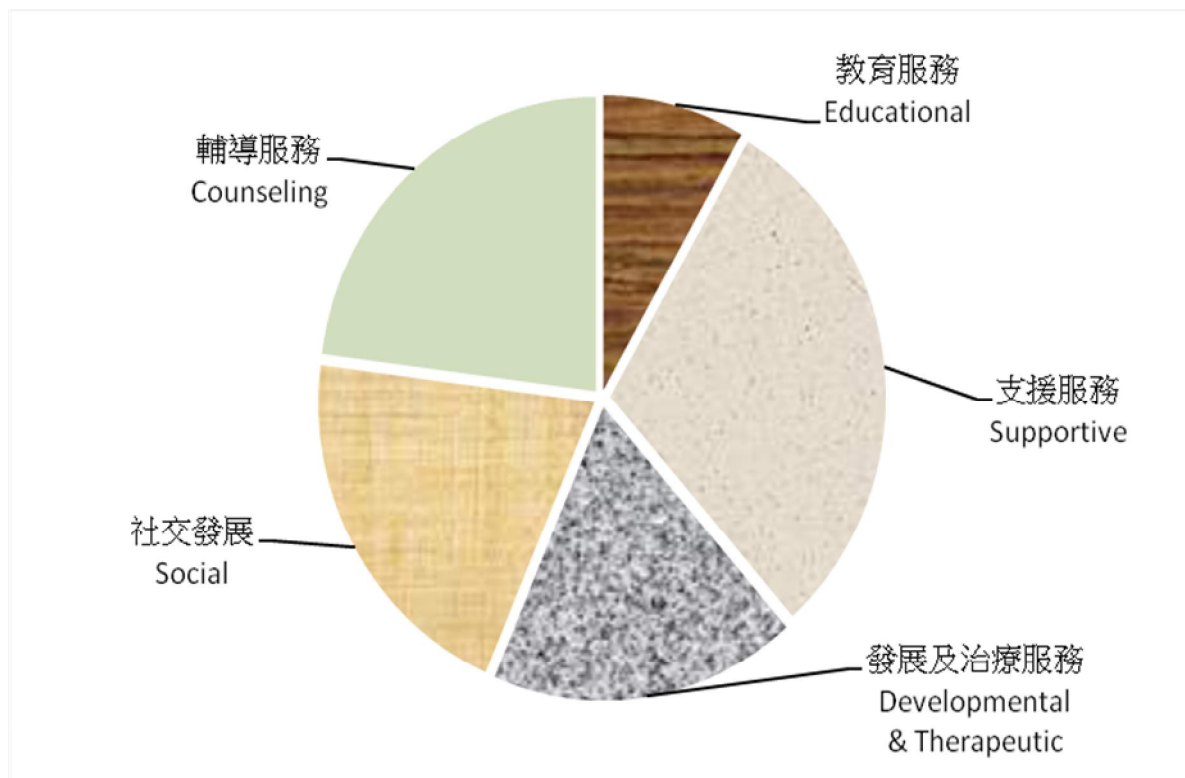
Medical <i>(Please refer to Statistics Report – 4)</i>	HK\$ 2,203,000 (48%)
Services <i>(Please refer to Statistics Report – 3)</i>	HK\$ 1,378,000 (30%)
Fundraising, Publicity and Publication	HK\$ 450,000 (10%)
Administration	HK\$ 373,000 (8%)
Depreciation	HK\$ 166,000 (4%)
Total	HK\$ 4,570,000*

* Round to the nearest thousand

Children's Heart Foundation

Statistics Report – 3

Expenditure on Services 2013



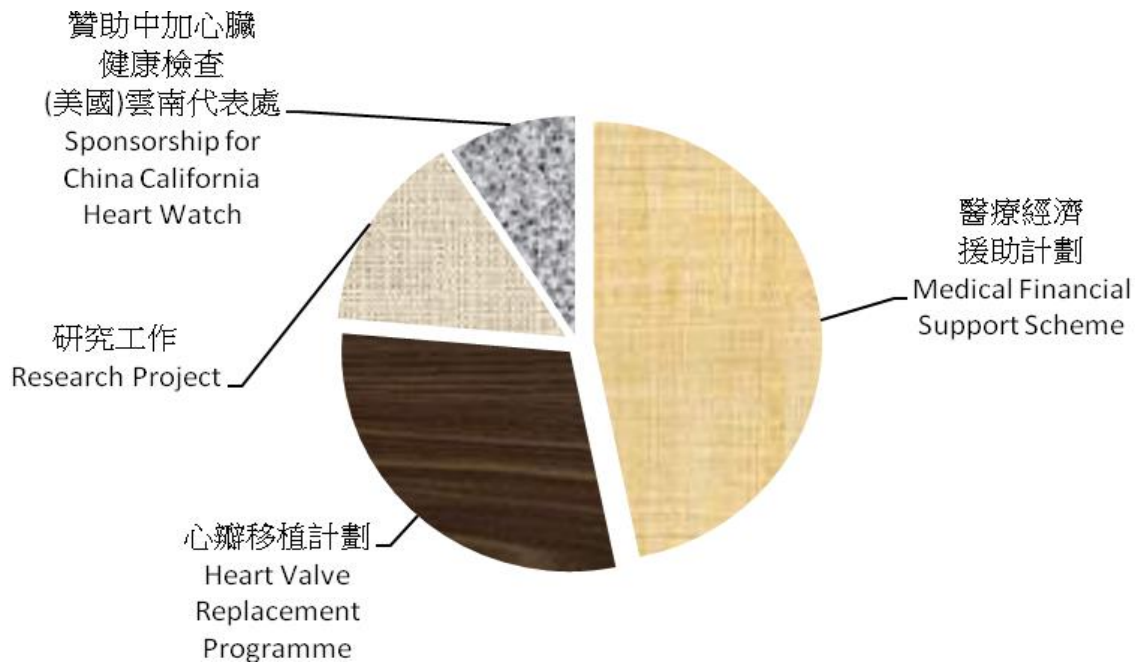
Supportive	HK\$ 416,000	(30%)
Counseling	HK\$ 317,000	(23%)
Social	HK\$ 284,000	(21%)
Developmental & Therapeutic	HK\$ 247,000	(18%)
Educational	HK\$ 114,000	(8%)
Total	HK\$ 1,378,000	

* Round to the nearest thousand

Children's Heart Foundation

Statistics Report – 4

Expenditure of Medical Sponsorship 2013



Medical Financial Support Scheme	HK\$ 1,033,000	(47%)
Heart Valve Replacement Programme	HK\$ 650,000	(30%)
Medical Research Sponsorship	HK\$ 320,000	(14%)
Sponsorship for China California Heart Watch	HK\$ 200,000	(9%)
Total	HK\$ 2,203,000	

* Round to the nearest thousand

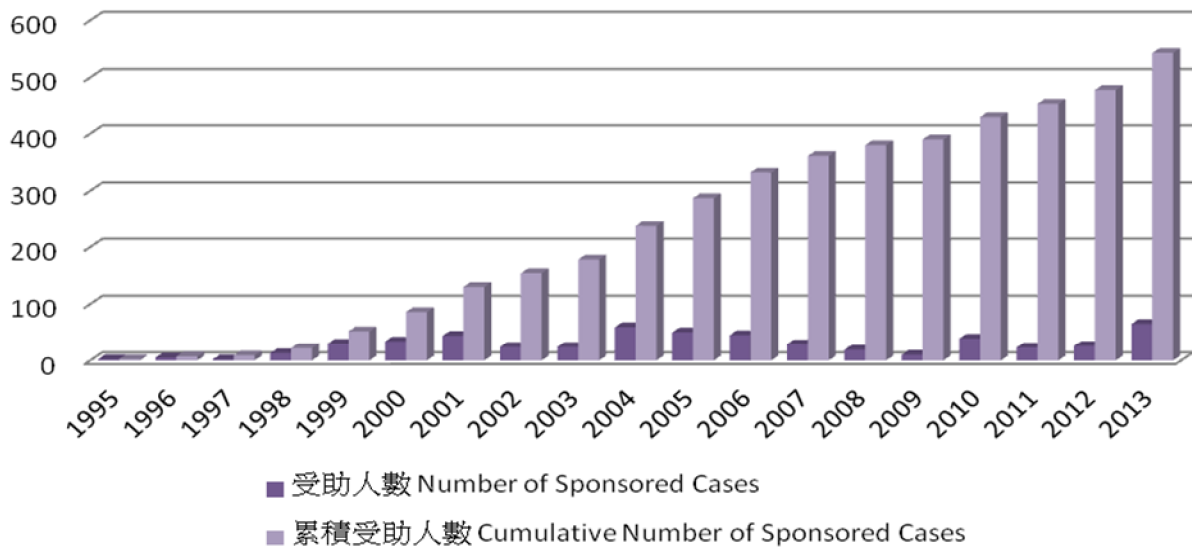


Children's Heart Foundation

Statistics Report – 5

Beneficiary in the Medical Treatment Sponsorship 1995-2013

Number of Beneficiary



	1995	1996	1997	1998	1999	2000	2001	2002	2003	2004
No. of Sponsored Cases	2	5	2	13	30	34	44	24	24	59
Cumulative no. of Sponsored Cases	2	7	9	22	52	86	130	154	178	237
	2005	2006	2007	2008	2009	2010	2011	2012	2013	/
No. of Sponsored Cases	50	45	29	19	10	39	23	23	66	/
Cumulative no. of Sponsored Cases	287	332	361	380	390	429	452	475	541	/

Remarks:

- 1) Medical Treatments mean Interventional Cardiac Catheterization, Pacemaker, Heart Valve (Homograft) and Nitric Oxide Treatments.
- 2) The Nitric Oxide Treatment was initiated by the CHF since 1999. The year of evidence proved the effectiveness of the treatment that the Government took up the responsibility from the CHF in 2007.
- 3) Heart Valve Project was initiated by CHF in 2000. The numbers of beneficiary depends the supplies of heart valve.

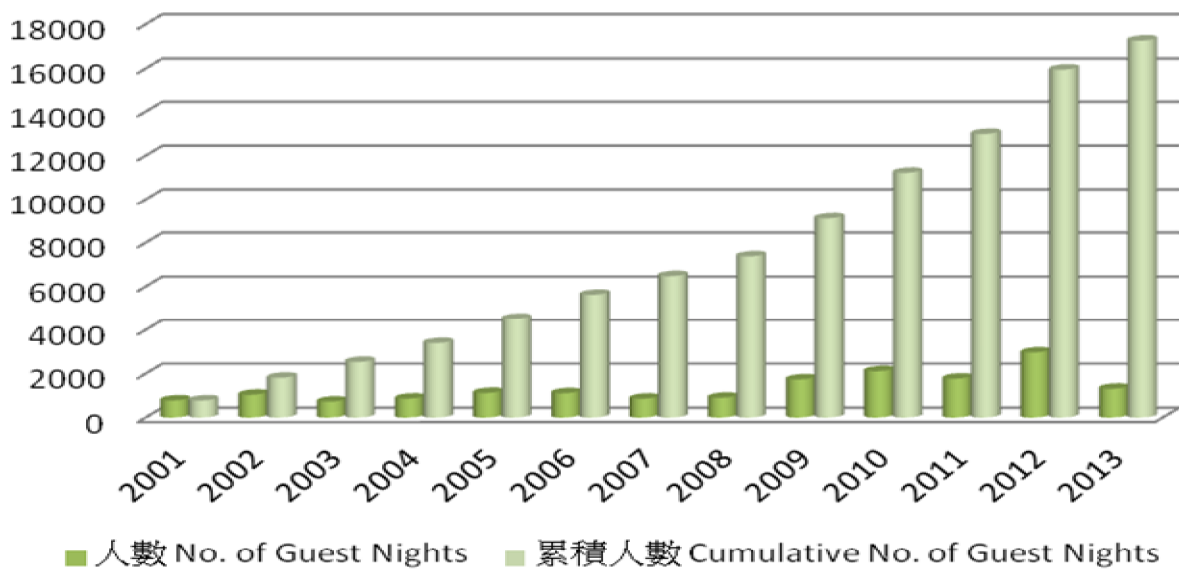


Children's Heart Foundation

Statistics Report – 6

Number of guest nights and cumulative guest nights at the House of the Heart 2001-2013

No. of Guest Night



	2001	2002	2003	2004	2005	2006	2007
No. of guests night	775	1,036	723	860	1,119	1,105	858
Cumulative no. of guests night	775	1,811	2,534	3,394	4,513	5,618	6,476

	2008	2009	2010	2011	2012	2013	/
No. of guests night	899	1,734	2,110	1,768	2,963	1,307	/
Cumulative no. of guests night	7,375	9,109	11,219	12,987	15,950	17,257	/

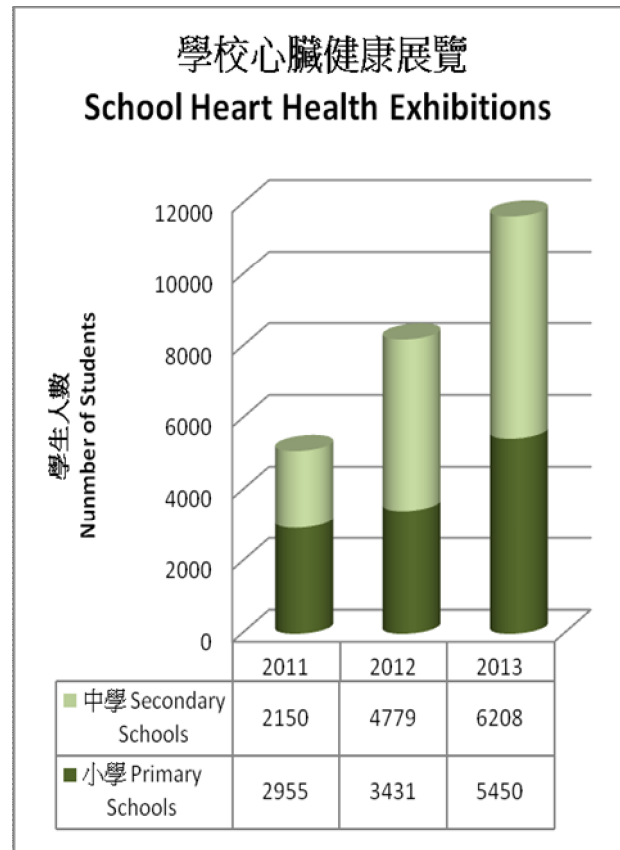
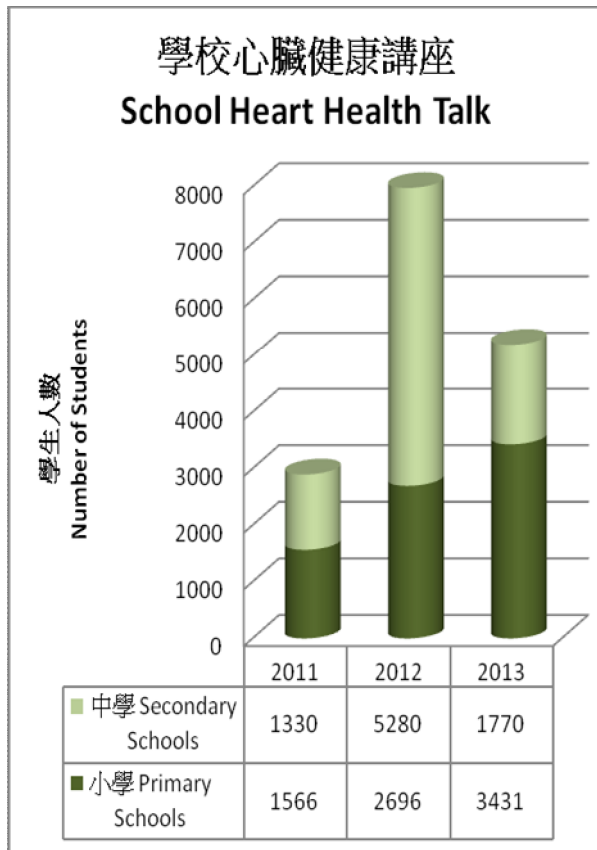
Remarks:

- 1) The number of guests night is subjected to the number of operation of the Department of Pediatric Cardiology of hospital and relocation of the HOH
- 2) Due to the relocation of the Department of Pardiatic Cardiology, the HOH was moved to Pokfulam accordingly in 2007 and 2008. In August 2013, the HOH was closed pending its relocation to Wah Fu Estate in accordance with the Queen Mary Hospital re-development. The HOH was resumed in May 2014.

Children's Heart Foundation

Statistics Report – 7

Heart Health Series 2011-2013 (School Exhibition and Talk)



Remark: The campaign was introduced in May 2011.

